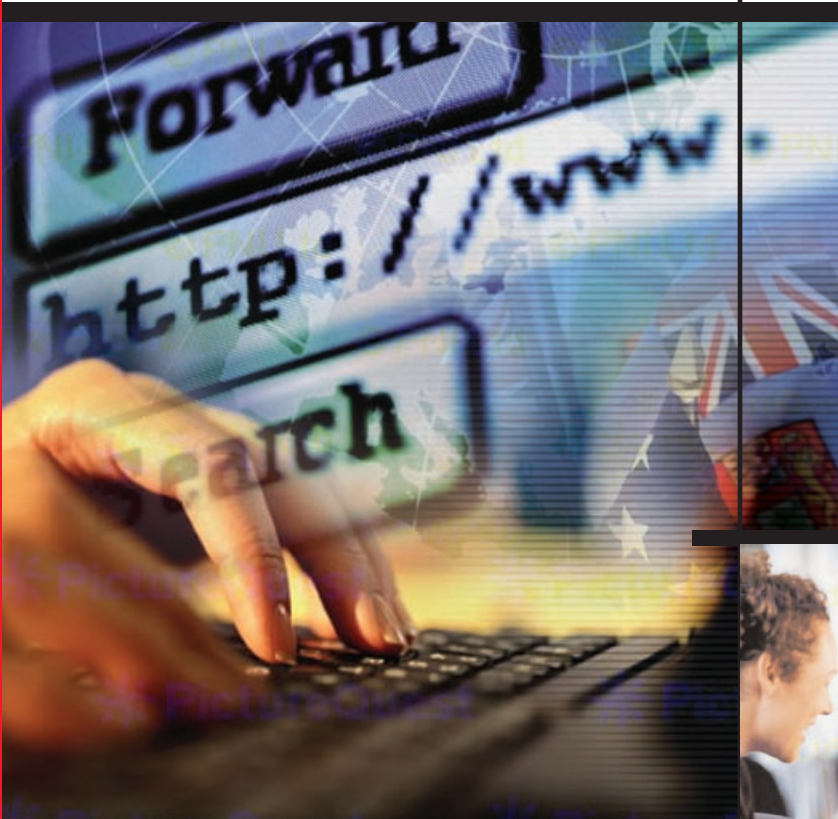


SPRINT GLOBAL DATA SOLUTIONS



**ENHANCED PERFORMANCE,
EXCEPTIONAL RELIABILITY
AND AWARD-WINNING
CUSTOMER SUPPORT**



SPRINT GLOBAL DATA SOLUTIONS

BRING THE WORLD OF E-BUSINESS WITHIN YOUR REACH

With Sprint global data solutions, you'll benefit from highly reliable and secure transmissions for your Internet, intranet, extranet, remote access applications and mission-critical data. Sprint has the flexible data solutions you need to connect your company's remote offices for maximum data-sharing efficiency.

With Sprint you get high-performance wide-area network (WAN) and Internet solutions for both domestic and international needs — solutions you cannot only rely on, but build on with new e-business applications. Our global data solutions and services help you leverage your existing technology or migrate to more advanced data solutions to keep mission-critical data flowing freely — and securely.

The self-healing SONET technology of the Sprint network, with the fewest FCC-reportable outages among major carriers, means exceptional survivability for your network. That, combined with some of the most comprehensive service level agreements in the industry, fortifies our commitment to network performance and quality customer service.

We're giving you the ability to compete in the e-business world.

Comprehensive suite of data solutions

With Sprint you have a wide range of data networking choices with a full spectrum of bandwidth options, including frame relay, asynchronous transfer mode (ATM) and private line services. With our nationwide and global reach you can extend productivity-enhancing applications throughout your enterprise just about anywhere in the world.

Enhanced frame relay service

Sprint Global Frame Relay ServiceSM is a reliable, affordable and versatile data service. It features multiple classes of service for priority handling of SNA, LAN, voice and Internet Protocol (IP) traffic with speeds from 56 Kbps up to DS3.

Each class of service is configured to the network response times, throughput and availability required for these applications. That means you can consolidate multiple networks to simplify network management and reduce costs.

High-powered ATM service

Sprint Global ATM ServiceSM is ideal for businesses with an insatiable demand for bandwidth as well as for businesses that want to integrate multiple traffic types over a single network platform. Bandwidth options range from DS1 up to OC3.

Quality of service standards allow you to give each application the priority it deserves. Sprint supports four classes of service:

- ▶ Constant bit rate for premium voice and video
- ▶ Variable bit rate — real-time for premium compressed voice, video and time-sensitive data traffic
- ▶ Variable bit rate — non-real-time for premium near real-time data
- ▶ Unspecified bit rate for less time-sensitive data

By using our highest-speed public network service, your business could do more in less time, at less cost and with fewer resources. The flexibility of Sprint Global ATM Service lets you consider next-generation solutions without worrying about bandwidth restrictions.

Secure, reliable private lines

Sprint Global Private Line ServicesSM are designed for highly demanding voice, video and data applications — applications that demand full-time availability, high levels of security and low or no delay. You can select from a full spectrum of scalable bandwidth options from voice grade up to OC48.

For international connections, Sprint offers full circuits and half circuits with E1 terminations in major U.S. cities.

Seamless service internetworking

Sprint gateway services make it possible to seamlessly communicate across frame relay, ATM and IP networks. That means you can



choose the most appropriate Sprint service for each location and minimize investments in additional equipment and technology. At the same time you can integrate your private lines into a single enterprise data network.

Sprint EISolutionsSM from an Internet leader

Internet-based networks are transforming the way we all do business. With an award-winning Tier 1 Internet backbone, industry-leading service level agreements and over 800 technology consultants, Sprint EISolutions can bring experience, service and support to your Internet solutions.

Our offerings include:

- ▶ Internet dedicated and dial connectivity with flexible bandwidth options from T1 up to OC3 and OC12
- ▶ Intranets and extranets for creating a secure, closed environment for information-sensitive, mission-critical IP applications
- ▶ Comprehensive security solutions, including managed firewalls, to protect your computer systems and decrease vulnerability to unauthorized users
- ▶ Industrial-strength Web hosting services for improved uptime and response time

SPRINT GLOBAL DATA SOLUTIONS

COMPREHENSIVE OFFERINGS FOR WIDE-AREA NETWORKS

These are general guidelines. The best solution may be a hybrid of multiple services, based on your specific requirements.

	Sprint Dedicated Internet Services	Sprint Corporate Dial Services	Sprint Frame Relay Service	Sprint ATM Service	Sprint Switched Digital Services™	Sprint Clearline® Private Line Services
Description	<p>Dedicated access to one of the fastest and most reliable Internet backbones</p> <ul style="list-style-type: none"> Lets you tailor access to varying needs of your net-working applications and employees around the world Tier 1 OC48 backbone, multicasting-enabled network Offers fully managed security services Seamlessly integrates with Sprint Frame Relay and ATM Services Supports any-to-any connections on demand 	<p>A private IP network for fast, reliable remote access to LAN or host applications</p> <ul style="list-style-type: none"> Runs over a separate IP backbone, avoiding public Internet congestion Uses the IP protocol end-to-end for faster response times Offers fully managed security services Seamlessly integrates with Sprint Frame Relay and ATM Services 	<p>A public data network service for medium- to high-speed data applications</p> <ul style="list-style-type: none"> Provides bandwidth on demand with the ability to burst up to the full access rate Makes it possible to connect any location to any other location at an affordable cost Seamlessly integrates with Sprint Internet and ATM Services Protocol insensitive 	<p>An ultra-high bandwidth, single-network solution for data, image, video and voice</p> <ul style="list-style-type: none"> Supports multiple classes of service with assured quality of service Provides bandwidth on demand with classes of services Unlimited scalability Seamlessly integrates with Sprint Frame Relay and Internet Services Protocol insensitive 	<p>A high-speed, all-digital switched service with dedicated or switched access</p> <ul style="list-style-type: none"> Supports data, voice and video Links smaller sites affordably to sophisticated digital applications Makes it possible to transmit data to any location in any country with dial-up capabilities 	<p>Dedicated connections for point-to-point and multipoint applications</p> <ul style="list-style-type: none"> Supports data, voice, video and image Ensures entire bandwidth is available on demand Automatically protects against external security threats Protocol insensitive
Type of service	<ul style="list-style-type: none"> Native IP service Dedicated and dial-up 	<ul style="list-style-type: none"> IP service Dedicated and dial-up 	<ul style="list-style-type: none"> Public-network fast-packet service utilizing PVCs Classes of service: LAN, SNA and voice 	<ul style="list-style-type: none"> Public-network cell-switching service utilizing PVCs and SVCs Classes of service: CBR, VBRnrt, VBRrt and UBR 	<ul style="list-style-type: none"> ISDN or switched 56 	<ul style="list-style-type: none"> Point-to-point and point-to-multipoint Multidrop
Speeds	<ul style="list-style-type: none"> 56/64 Kbps – 2.48 Gbps 	<ul style="list-style-type: none"> 56/64 Kbps – 45 Mbps 	<ul style="list-style-type: none"> 56 Kbps – 45 Mbps CIR from 0 to port speed 	<ul style="list-style-type: none"> 1.544 Mbps – 622 Mbps N x DS1 IMA 	<ul style="list-style-type: none"> 56 Kbps – 1.544 Mbps 	<ul style="list-style-type: none"> 2.4 Kbps – 155 Mbps for point-to-point; up to 64 Kbps for multipoint/multidrop
Types of traffic supported	<ul style="list-style-type: none"> Low to high volumes Occasional to frequent, bursty transmissions 	<ul style="list-style-type: none"> Low to high volumes Occasional to frequent, bursty transmissions 	<ul style="list-style-type: none"> Low to high volumes Occasional to frequent, bursty transmissions 	<ul style="list-style-type: none"> Low, medium and high volumes Frequent, bursty and continuous transmissions 	<ul style="list-style-type: none"> Data, video and voice Occasional to frequent, bursty transmissions 	<ul style="list-style-type: none"> High volumes Frequent, continuous and predictable transmissions
Support services	<ul style="list-style-type: none"> Access, Internet VPN, CPE, managed security, Web hosting, multicasting and managed services 	<ul style="list-style-type: none"> Access, Internet VPN, CPE, managed security and managed services; customizable user software for dial access 	<ul style="list-style-type: none"> Access, CPE, managed network and disaster recovery services, network reporting and gateways 	<ul style="list-style-type: none"> Access, CPE, managed-network services, proxy agent, SNA 	<ul style="list-style-type: none"> Access and CPE 	<ul style="list-style-type: none"> Access, CPE, disaster recovery service, dedicated service center support
Classic applications	<ul style="list-style-type: none"> Network access to public and private Internet, Internet news, e-mail; public and private access to customer Web site intranets, extranets, Internet VPNs and other network-based applications 	<ul style="list-style-type: none"> Remote access to internal LANs and hosts, intranets, extranets, Internet VPNs and other network-based applications 	<ul style="list-style-type: none"> LAN-to-LAN connections; virtually any data application, including SNA 	<ul style="list-style-type: none"> Corporate data networks (all data applications) Corporate converged networks (data, image, video and voice) 	<ul style="list-style-type: none"> Remote LAN access, high-speed Internet access, call centers, high-resolution image, bulk data transmission, video conferencing and backup for other services 	<ul style="list-style-type: none"> Corporate backbone networks, IBM multidrop applications, high-volume video transmission and WAN-to-WAN connectivity
Key decision criteria	<ul style="list-style-type: none"> Scalability: number of simultaneous users, traffic volume, bandwidth requirements, mobile or stationary access 	<ul style="list-style-type: none"> Best suited for internal IP applications when public Internet access is not required 	<ul style="list-style-type: none"> Best suited for data transport and LAN-to-LAN or client/server applications Less costly than private lines for multiple-site inter-connections 	<ul style="list-style-type: none"> Ideally suited for emerging high-bandwidth data applications where scalability and quality-of-service guarantees are crucial; also for converged enterprise networks that carry video and voice as well as data 	<ul style="list-style-type: none"> Best suited for occasional, high-bandwidth requirements or disaster recovery Particularly useful for voice when you need quick call setup times and/or computer-telephony integration 	<ul style="list-style-type: none"> Best suited for applications that require high performance, high security and high availability with low delay
Service level agreements*	<ul style="list-style-type: none"> End-to-end availability: 100% with BMAN; 99.9% without BMAN SLA for delay 99.0% busy-free dial access 	<ul style="list-style-type: none"> End-to-end availability: 100% with BMAN; 99.9% without BMAN SLA for delay 99.0% busy-free dial access 	<ul style="list-style-type: none"> End-to-end availability: 100% with BMAN; 99.9% without BMAN Other SLAs for delay and data delivery rate Mean-Time-to-Repair (MTTR) 	<ul style="list-style-type: none"> End-to-end availability: 100% with BMAN; 99.9% without BMAN Other SLAs for delay and data delivery rate 	<ul style="list-style-type: none"> Established performance objectives 	<ul style="list-style-type: none"> Established performance objectives with credit for service interruptions
Global availability	<ul style="list-style-type: none"> Yes 	<ul style="list-style-type: none"> Yes 	<ul style="list-style-type: none"> Yes 	<ul style="list-style-type: none"> Yes 	<ul style="list-style-type: none"> Yes 	<ul style="list-style-type: none"> Yes

Abbreviations

ATM	asynchronous transfer mode	IMA	inverse multiplexing over ATM	TCP	transmission control protocol
BMAN	broadband metropolitan-area network	IP	Internet protocol	UBR	unspecified bit rate
CBR	constant bit rate	PVC	permanent virtual circuit	VBRnrt	variable bit rate non-real time
CIR	committed information rate	SLA	service level agreement	VBRrt	variable bit rate real time
CPE	customer premises equipment	SNA	systems network architecture	VPN	virtual private network
		SVC	switched virtual circuit		

Bandwidth

56/64 Kbps	DS0
1.544 Mbps	DS1/T1
45 Mbps	DS3/T3
155 Mbps	OC3
622 Mbps	OC12
2.48 Gbps	OC48

*All SLAs subject to Sprint tariffs. Contact your Sprint representative for details.



SPRINT GLOBAL DATA SOLUTIONS

LEADING THE INDUSTRY IN PERFORMANCE AND SUPPORT



Why Sprint for data? Here are a few of the reasons why so many businesses rely on Sprint for their most critical business operations.

Unsurpassed survivability

We employ a unique synchronous optical network (SONET) ring technology throughout our nationwide fiber-optic backbone network, coupled with broadband metropolitan area SONET networks (BMANs). Together, they make Sprint data services inherently more survivable. Should a fiber cut or equipment failure occur, you can count on restoration in milliseconds.

The reliability and high performance of our wide-area network solutions can give your business the edge it needs to conduct e-business confidently and competitively, throughout the United States and around the globe. All of which make Sprint global data services the preferred choice for critical business operations.

Strong performance guarantees

We stand behind our network performance with the industry-leading Sprint Global Commitment that provides for:

- ▶ Timely installation
- ▶ 100% end-to-end availability
- ▶ Quick turnaround repair service

All are backed by substantial credits.

And the Sprint Global Commitment is in addition to our extensive, product-specific service level agreements.

Top-ranked performance and support

User surveys consistently rank Sprint as first in customer service, year after year. For example, in *Network Magazine's* 2000 North American Carrier Survey, network professionals rated Sprint the top provider of frame relay service with high scores for reliability, network performance, support and price.

Expert engineering and technical resources

As your data network grows and becomes more critical to your business, so does the need for trained engineering professionals. Now you can call on Sprint to supplement your organization's technical experience and expertise. We offer a collection of value-added Sprint Plus Services — all executed by Sprint network professionals — to help you better plan, implement and manage your data networks.

When you supplement your existing staff with Sprint engineering and technical professionals, your business can:

- ▶ Speed deployment of new networking technologies and give your business a competitive edge
- ▶ Assure that network applications are working at peak performance and minimize potential problems that can impact business operations
- ▶ Reduce long-term IT staffing costs by engaging short-term expertise when and where you need it

More than 25 years of data leadership

1975

First to launch an X.25 public data network

1991

First to deploy frame relay nationwide

1992

First carrier to provide commercial Internet access

1993

First to offer nationwide ATM service

1993

First to announce plans for a nationwide survivable SONET backbone

1998

First to launch a next-generation converged network powered by ATM and SONET — the Sprint ION® Integrated On-Demand Network





**For more information, talk to
your Sprint representative or
call 1-800-816-7325.**

**Visit Sprint on the Internet:
www.sprintbiz.com**

